



DONNELLYDIST.COM

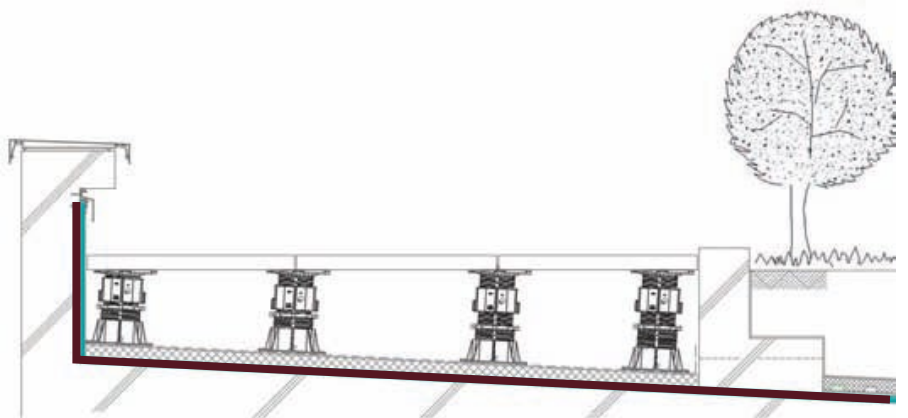
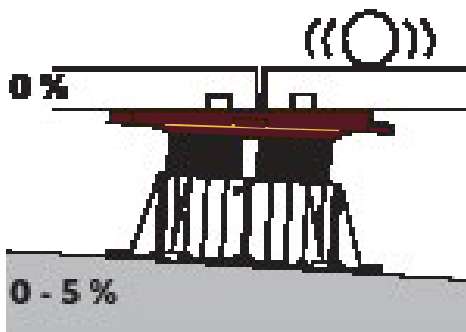


SLOPE



SLOPE CORRECTOR

The Buzon pedestals are equipped with a slope corrector incorporated into the head. This corrector can compensate for a slope of 0 to 5% with precise adjustment increments of 0.5%



INCLUDED

MATERIALS

Co-polymer polypropylene (CPP),
material thickness $\frac{1}{16}$ " to $\frac{13}{64}$ "

Composition:
80% CPP recycled
20% talc and UV master batch black.
Use of recycled materials exclusively of EU origin.

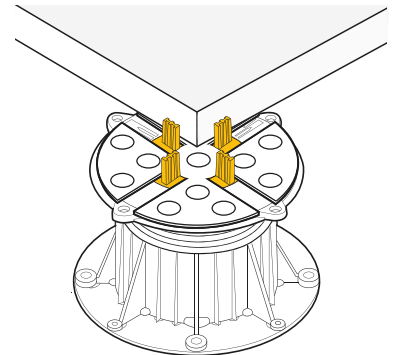
TOP Ø 6 inches, 7.4 inch²
Ø 155mm, 188cm²

BASE Ø 7.8 inches, 12 $\frac{3}{8}$ inch²
Ø 200mm, 314cm²



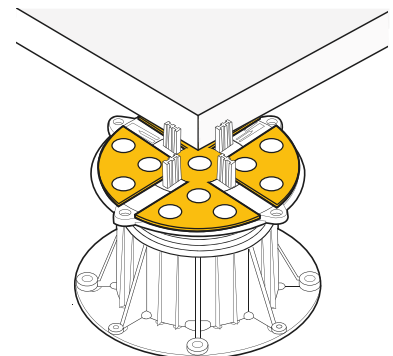
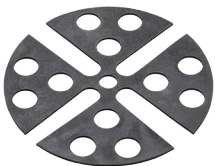
SPACER TABS

Spacer tabs available in various thickness:
 $\frac{1}{8}$ " (3mm) or $\frac{3}{16}$ " (4.5mm) which provide proper alignment of the pavers.
Spacer tabs are placed on top of the Buzon Pedestal.



SHIM

The shim is a $\frac{3}{32}$ " (2mm) clover-shaped leveller.
The shim stabilizes the paver, provides additional acoustic comfort and compensates for variations in paver thickness.



SERIES

PEDESTAL KIT

Each part number provides a base, a spacer tab in relation to the part number (1/8" or 3/16") and a 2mm Shim. The heights of the pedestals seen below does not include tile thickness.



B-PTSK18DD1
B-PTSK316DD1

Pedestal tile support with adjustable height from 1³/₁₆" - 1³/₄" (33 - 44mm)
Weight: 0.7 lbs. (0,318 kg)



B-PTSK18DD2
B-PTSK316DD2

Pedestal tile support with adjustable height from 1³/₄" - 2¹/₄" (44mm - 57mm).
Weight: 0.7 lbs. (0,318 kg)



B-PTSK18DD3
B-PTSK316DD3

Pedestal tile support with adjustable height from 2¹/₁₆" - 3¹/₁₆" (55mm - 79mm).
Weight: 0.78 lbs. (0,356 kg)



B-PTSK18DD4
B-PTSK316DD4

Pedestal tile support with adjustable height from 3" - 4¹/₄" (77mm - 108mm).
Weight: 1 lb. (0,469 kg)



B-PTSK18DD5
B-PTSK316DD5

Pedestal tile support with adjustable height from 4" - 6³/₄" (100mm - 170mm).
Weight: 1.5 lbs. (0,667 kg)



UPSIDE-DOWN SYSTEM

If the application requires a large support surface, for example near walls and vertical upstands, the pedestals can also be used in the inverted position.

The spacer tabs and shim can be fitted onto the reverse surface of the pedestal to work the same way.

SERIES

PEDESTAL KIT (timber)

Each part number provides a base, and a joist support. Joist supports are fixed in place using plug-in system on Buzon pedestals in the DPH range. Firmly holds the joists supporting the timber decking.



B-PTSKSJWDD1

Pedestal support for timber installation with adjustable height from 1³/₁₆" - 1³/₄" (33 - 44mm)

Weight: 0.7 lbs. (0,318 kg)



B-PTSKSJWDD2

Pedestal support for timber installation with adjustable height from 1³/₄" - 2¹/₄" (44mm - 57mm).

Weight: 0.7 lbs. (0,318 kg)



B-PTSKSJWDD3

Pedestal support for timber installation with adjustable height from 2¹/₁₆" - 3¹/₁₆" (55mm - 79mm).

Weight: 0.78 lbs. (0,356 kg)



B-PTSKSJWDD4

Pedestal support for timber installation with adjustable height from 3" - 4¹/₄" (77mm - 108mm).

Weight: 1 lb. (0,469 kg)



B-PTSKSJWDD5

Pedestal support for timber installation with adjustable height from 4" - 6³/₄" (100mm - 170mm).

Weight: 1.5 lbs. (0,667 kg)



TIMBER

Joist supports are fixed in place using plug-in system on Buzon pedestals in the DPH range. Firmly hold the joists supporting timber decking.

SERIES

LOAD

Yield weight for each pedestal.

Each pedestal has a weight limit depending on how the tiles are installed. Tile installed on full surface of pedestal is a 1/1 position, tile installed on half of the pedestal is 1/2 position and corner installation is 1/4 position.

1/1
POSITION

1/2
POSITION

1/4
POSITION



1^{5/16}" - 1^{3/4}"



1^{3/4}" - 2^{1/4}"



2^{1/16}" - 3^{1/16}"



3" - 4^{1/4}"



4" - 6^{3/4}"

1/1	3,436 lbf.
1/2	2,176 lbf.
1/4	1,093 lbf.

1/1	3,208 lbf.
1/2	2,168 lbf.
1/4	1,154 lbf.

1/1	3,468 lbf.
1/2	2,352 lbf.
1/4	1,394 lbf.

1/1	3,768 lbf.
1/2	2,687 lbf.
1/4	1,923 lbf.

1/1	3,436 lbf.
1/2	2,176 lbf.
1/4	1,093 lbf.

ADJUSTABLE

Adjustable height of about 1" to 42" (18 to 1070 mm),
adjustment ring and integrated slope corrector (up to 5%)
Ideal support for use in public spaces or on major construction

The Pedestal maintains its strength and stability even under heavy and frequent use. Thanks to its reinforced structure, it is particularly recommended for use with heavier floor finishes such as large-format slabs.

COMPOSITION

1 Top of the Pedestal

Adjustable height of about 1" to 42" (18 to 1070 mm),
adjustment ring and integrated slope corrector (up to 5%)
Ideal support for use in public spaces or on major construction projects.

2 Couplers

Couplers are used when the height of the pedestal must exceed 7" (175mm). Locking keys on either side allow for mechanical bracing, providing enhanced stability when the height exceeds 27" (600mm).

3 Base

The base can be simply positioned or fixed to any substrate. It has 8 fixing holes for screws or bolts. The head, adjustment ring base have a safety feature, to prevent the top of the sleeve from unscrewing. Base diameter 8" (200mm), surface area 10ft.² (314cm)

4 Slope Corrector

The slope corrector (0 to 5%) is built into the head of pedestals and allows precise adjustment in increments of 0.5%

5 Locking Keys

These keys lock the pedestals at the required height.



ADD-ONS

COUPLERS

The couplers are fitted by screwing between the base and the head of the pedestal to make the higher pedestal in the DPH range. Thanks to the couplers, pedestals can reach a height of 42" (1,070mm).



B-PTSADDC2

Coupler extension 4" additional height.



B-PTSADDC5

Coupler extension 9" additional height.



7" - 12"

12" - 15"

14" - 21"

19" - 24"

21" - 29"

25" - 33"

28" - 37"

32" - 42"

ADD-ONS

LOAD

Yield weight for each pedestal. Each pedestal has a weight limit depending on how the tiles are installed. Tile installed on full surface of pedestal is a 1/1 position, tile installed on half of the pedestal is 1/2 position and corner installation is 1/4 position.

1/1
POSITION

1/2
POSITION

1/4
POSITION



7" - 12"

12" - 15"

14" - 21"

19" - 24"

21" - 29"

25" - 33"

28" - 37"

32" - 42"

1/1	3,439 lbf.
1/2	2,653 lbf.
1/4	1,611 lbf.

1/1	2,932 lbf.
1/2	2,089 lbf.
1/4	1,327 lbf.

1/1	2,817 lbf.
1/2	1,962 lbf.
1/4	1,186 lbf.

1/1	2,914 lbf.
1/2	2,000 lbf.
1/4	1,253 lbf.

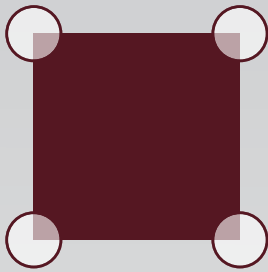
1/1	2,765 lbf.
1/2	2,186 lbf.
1/4	1,193 lbf.

1/1	2,947 lbf.
1/2	2,401 lbf.
1/4	1,516 lbf.

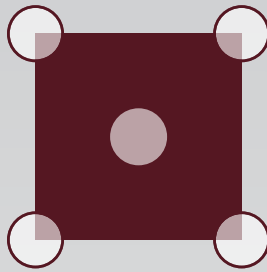
1/1	2,899 lbf.
1/2	2,029 lbf.
1/4	1,561 lbf.

1/1	2,784 lbf.
1/2	2,096 lbf.
1/4	1,383 lbf.

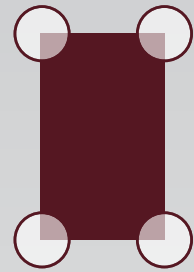
CONFIRGURATIONS



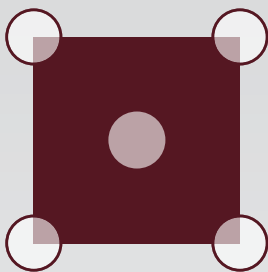
400 x 400 mm | 16" x 16"
 500 x 500 mm | 20" x 20"
 600 x 600 mm | 24" x 24"



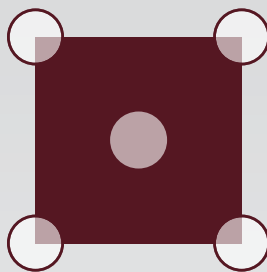
500 x 500 mm | 20" x 20"
 600 x 600 mm | 24" x 24"



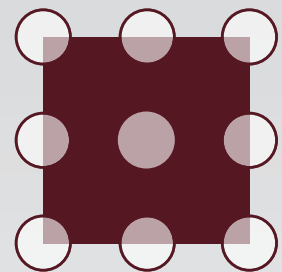
400 x 600 mm | 16" x 24"



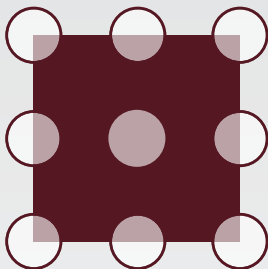
750 x 750 mm | 30" x 30"



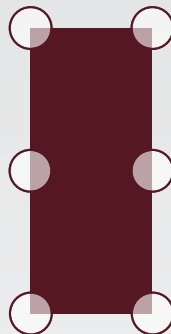
800 x 800 mm | 32" x 32"



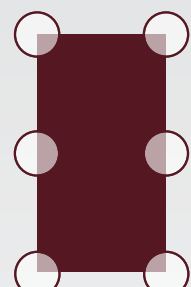
900 x 900 mm | 36" x 36"



1000 x 1000 mm | 40" x 40"
 1200 x 1200 mm | 48" x 48"



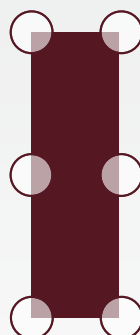
600 x 1200 mm | 28" x 48"



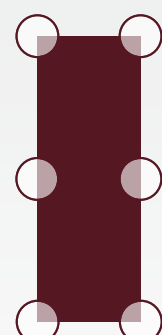
800 x 800 mm | 18" x 36"



200 x 1200 mm | 8" x 48"



300 x 1200 mm | 12" x 48"



400 x 1200 mm | 16" x 48"

ADD-ONS

ACCESSORIES

A few accessories and tools come with or can be added to the installation process of the pedestal for better results.



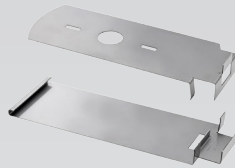
B-PTSADDWLK

Wind proof screw and washer for outdoor installation.



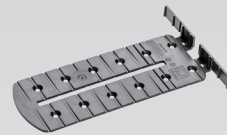
B-PTSADDPAD

Protective layer pad for water-proof membranes.



B-PTSADDEND

Wraps the edge of the space created beneath the deck installed on pedestals from the DPH range. Two blades with claws encircle the 20 mm-thick plinth.



B-PTSADDUWALL

Creates a uniform 5 mm (or greater) gap between the paver and the wall, enabling water flow to protect terrace.

TOOLS

Tools to use for helping in the installation process.



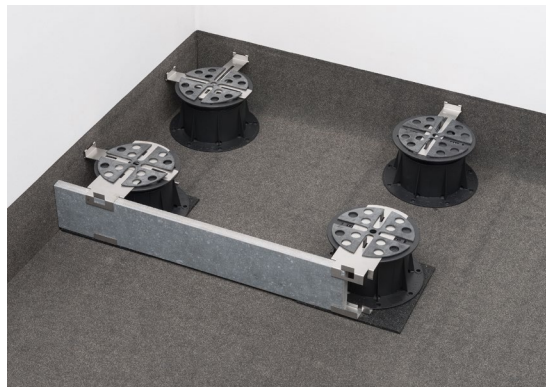
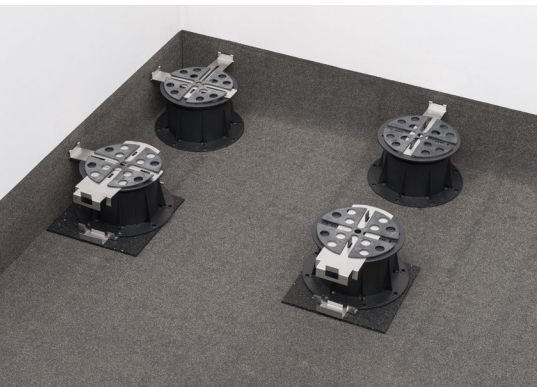
B-PTSDDLEVEL

Essential tool for the Buzon slope correction system. Measures the value and direction of the slope in any location where a Buzon pedestal will be located.



B-PTSDDUKEY

Key to adjust height of pedestal.



for



www.donnelydist.com
262-820-1212
Sussex, WI

www.buzonusa.us
www.buzon-world.com/fr
Herstal, Belgium
New York, NY

