



INCLUDED!
 Two buckets
 Standard mixing blade
 Wrench kit
 User Manual

IPERBET



VOLTAGE
 110 volt



**GEAR
 DRIVEN**
 110vlt./0.5hp



RPM
 66

MXJPM	23" x 19" x 30"	12 gal.	up 100lbs	1680 (motor) 66 (bucket)
--------------	-----------------	---------	-----------	----------------------------



- Mixes tile adhesives, thinsets, grout, plaster, concrete, quartz plaster and more.
- Capable of mixing up to 100 lbs of material.
- Less air is trapped for a homogeneous mix.
- Fixed paddle.
- Rotating 12 gallon bucket.
- Handless mixing with dual blade.
- Includes 2 buckets.



**MIXING
BLADES**

**IPERBET
MXFJPM**

Tool kit with half blade and triple bars for mixing fluid product.



**CLUMP
BREAKER**

**IPERBET
MXBJPM**

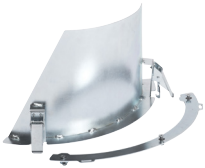
Clump breaker for dry pack mix or concrete.



**REPLACEMENT
BUCKET**

**IPERBET
MXJPMB**

Replacement or additional bucket for the Iperbet 12gal capacity.



**BUCKET
SPOUT**

**FLUID MIXER
MXFMSC**

Conveyor spout for fluid mix bucket.



**REPLACEMENT
BUCKET**

**FLUID MIXER
MXFMB**

Replacement or additional 20gal. bucket for fluid mixer.



**GAUGE
RAKE**

**FLUID MIXER
GFAFR**

Gauge rake height-adjustable for self-leveling. Pole not included.